

State of Wyoming Corner Record

(In compliance with the CORNER PERPETUATION AND FILING ACT, Wyoming Statutes, 1977,
Section 36~11~101, et seq., and the Rules and Regulations of the Board of Registration for Professional
Engineers and Professional Land Surveyors)

The reverse side of this form may be used if more space is needed.

The Record of the original survey and the citation of the source of the historical information (if the corner is lost or obliterated). The description of the corner monumentation evidence as found and/or the monument and it's accessories as established to perpetuate the location of this corner. A sketch of the relative location of this Monument, accessories, and reference points with the course and distance to adjacent corner (s) (if determined during this Survey). The Method and Rationale used for the reestablishment of lost and obliterated corner.

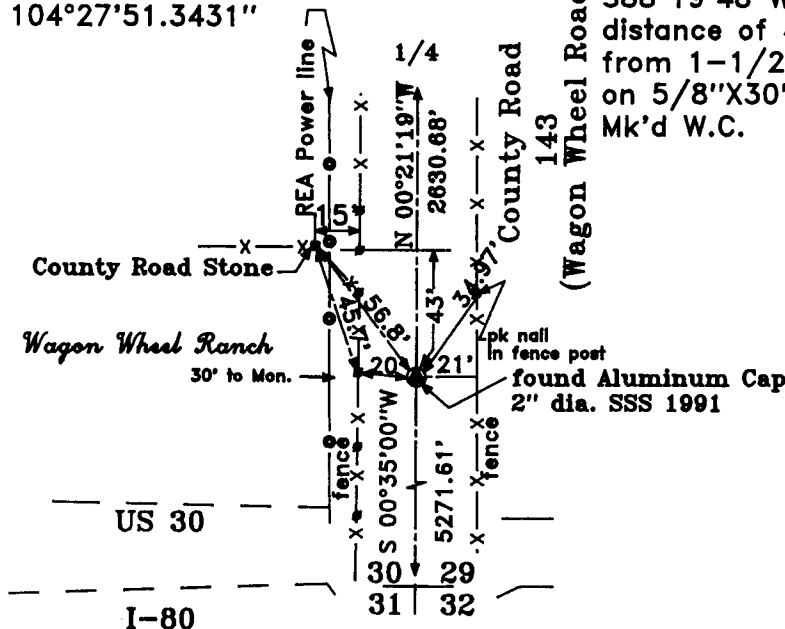
GLO: Edwin James Deputy Surveyor & Alfred M. Rogers (No.15) date:20 May1871, finished 16 June 1871; North between Section 29 & Section 30 [variation 15.35°E] 40 chains set a sand stone 17"X10"X4" for 1/4 Section Corner; 80 chains set 21"X10"X6" sand stone for Section Corner 19/20/29&30. Wyo. Highway Dept. 1963, N 00°35'E a distance of 691.8 ft. from the center line of the East bound lane of Interstate Highway I-80. Steel Surveying Services, 17 April 1991; Set 5/8"X24" rebar with 2" Aluminum Cap down 0.5' from surface of the road. located 0.5' East of C/L of County Road 143, 691.8' North of C/L East Bound Lane of I-80, 21' West of N-S fence, 20' East of N-S fence & 30' East of N-S electric power line.

Found Monument as noted, also found 12"X6"X5" Granite boulder marked "CR", well set located next to a fence post 15' West of the N-S fence line and being Northwesterly 56.8' from the Section corner monument as found.

Latitude & Longitude as determined from NGS station "Burns & the Burns Water Tower.

[NAD 1927]
Latitude: 41°09'29.2970"
Longitude: 104°27'51.3431"

Note: Monument lies S88°19'48"W a distance of 40.00' from 1-1/2" Al.Cap on 5/8"X30" rebar Mk'd W.C.

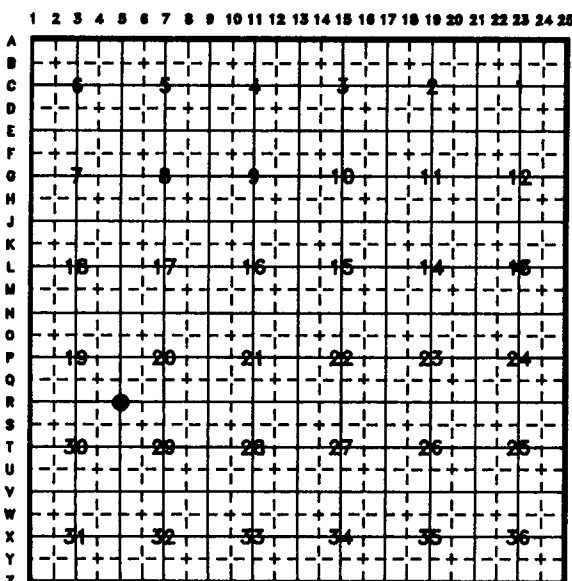


255177
 LARAMIE COUNTY CLERK
 CHEYENNE, WY.
 1999 JUN 29 AM 11:55

Date of Field Work: June A.D. 1999 Office Reference: S20BRKTT (Open Trail Estates)

Cross Index Diagram

T. 14 N. R. 63 W. 6th P.M.



Firm/Agency, Address
Terrestrial Surveying & Mapping Co.
"Your Friendly Neighborhood Surveyor"
 1127 Terry Ranch Road
 Cheyenne, Wyoming 82007
 Telephone Number: (307) 634-9360

This Corner Record was prepared by
me or under my direction and
supervision.

SEAL & SIGNATURE

